

FLEXIBILITY

CREATIVITY

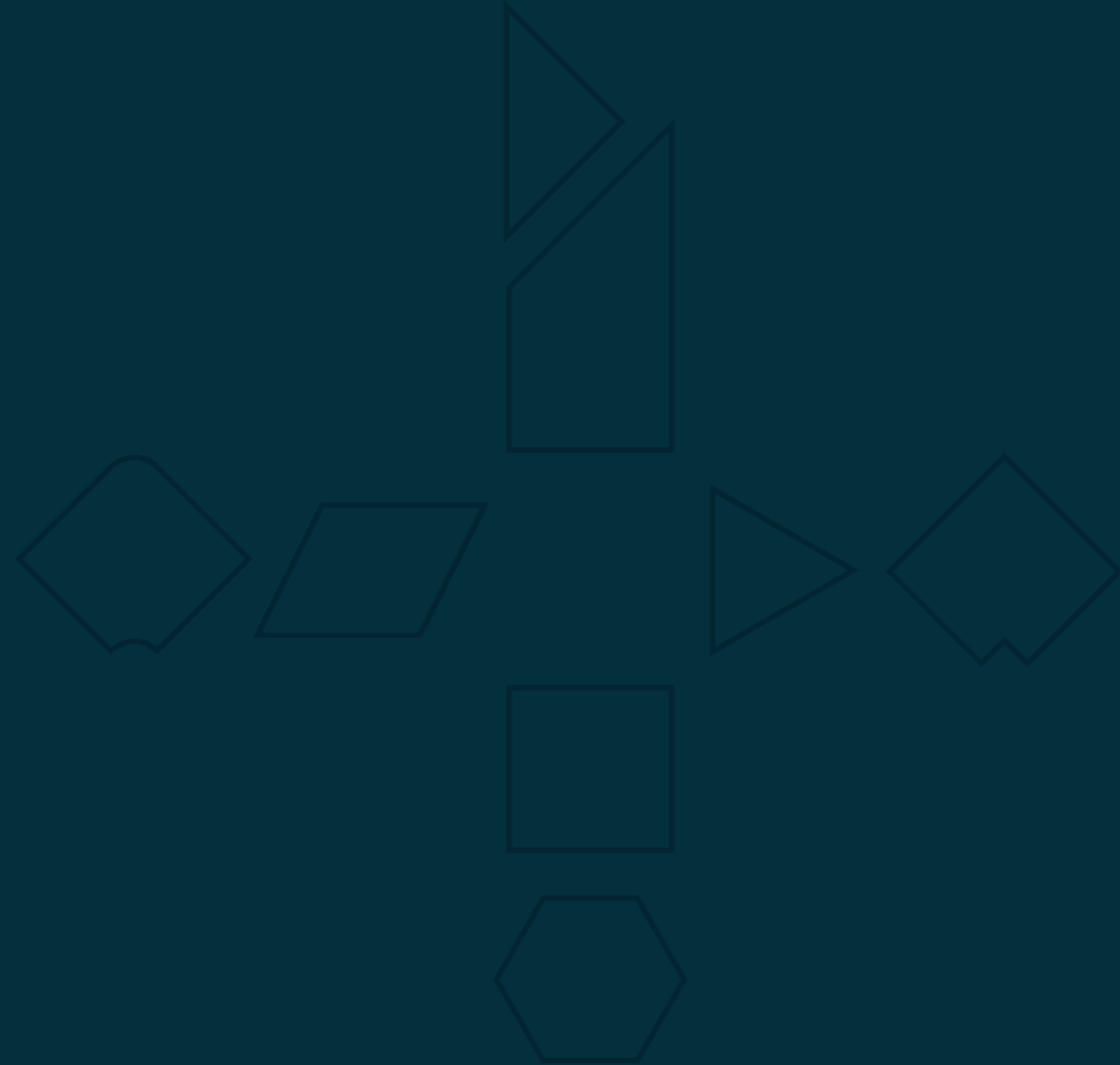
W

SUSTAINABILITY

Fletco[®]
CARPET TILES

Fletco Carpet Tiles

- walk on visions



We weave three key fibres into all Fletco carpet tiles: Flexibility, creativity and sustainability.

This colourful and imaginative carpet tiles concept gives the client freedom to design a unique flooring solution to match the individual project perfectly, creating interesting effects within the specific context of the space and other interiors in the building.

The Fletco Group is a modern company, based in Denmark, that has a proud tradition of manufacturing industrial textile products to high-quality craftsmanship standards. Product development, technological innovation and efficient and eco-friendly production are key to the entire group.

Fletco addresses both the residential and contract market and is one of Europe's leading wall-to-wall carpet brands. Learn more at www.fletco.com

Sebastian Wrong

by



'The premise for the collaboration with Fletco was to work with Fletco's unique carpet systems that they have developed over the last few years. We wanted to exploit this production technique to create a collection of carpet tiles that would push the conventional floor tile typology into a new direction and dimension. Utilising the standard production setup they have for their existing tile ranges, we can now offer a new typology of product in terms of shape and colour... ultimately offering customers the opportunity to customize their projects using our new tile system.'

The concept was developed from the idea of using an endless pallet of colours combined with a selection of geometric shapes that can connect and interlock to make many possibilities. The precision of the laser cutting used for the production of the tile shapes combined with the colour range, gives us the possibility to really play with colour, form and pattern in synchronised harmony. This tile collection offers the customer the opportunity to tailor a floor into endless possibilities subject to their needs... flexibility, creativity and opportunity.'

Sebastian Wrong



Sebastian Wrong

Sebastian Wrong is one of Britain's busiest designers and furniture manufacturing experts, with a portfolio that spans lighting, accessories, furniture and gallery projects. His eventful 15 year career has resulted in an array of impressive technical skills, but has also rendered him with a formidable list of contacts, amongst whom are some of the worlds most influential designers, architects and artists.

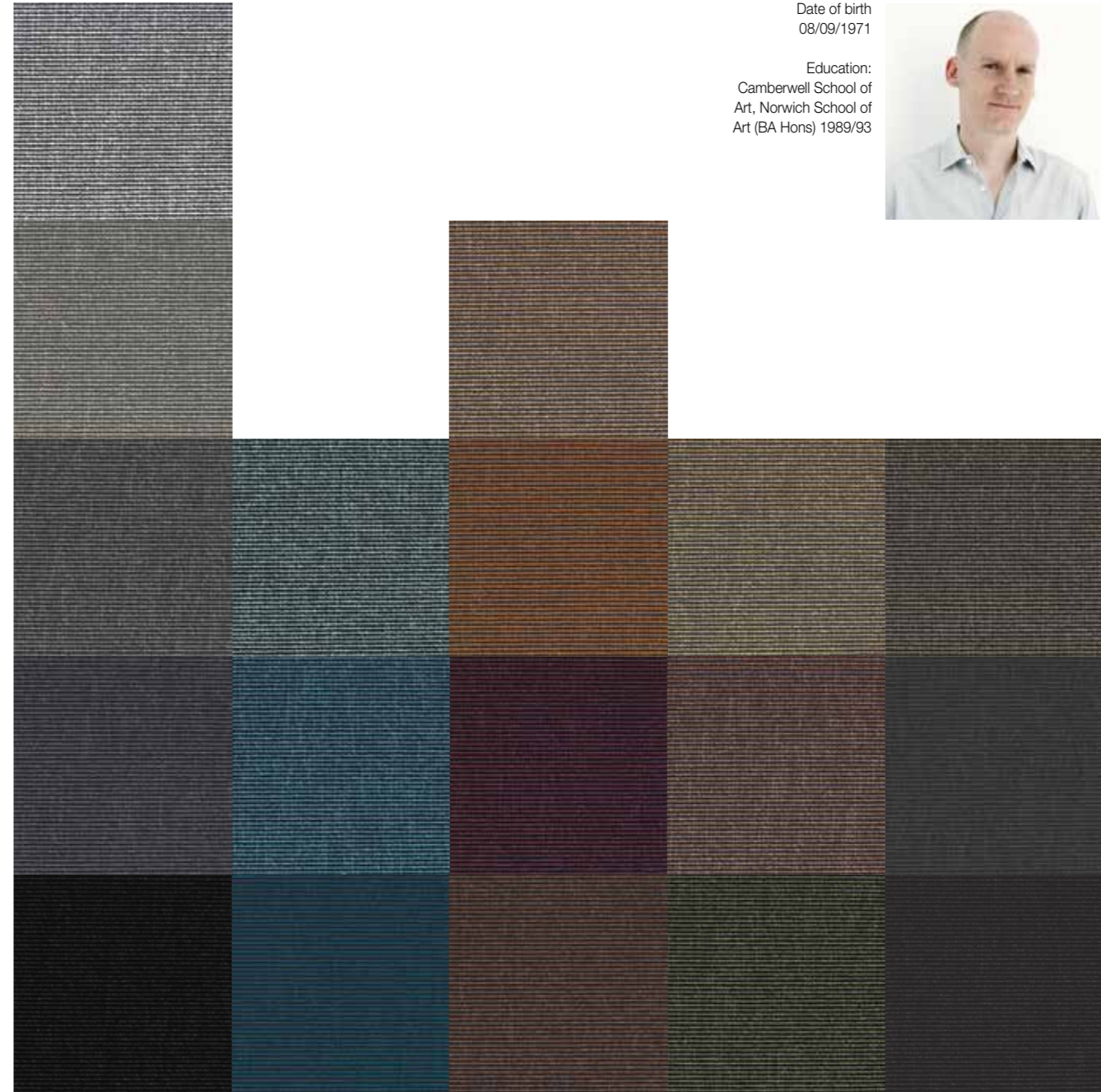
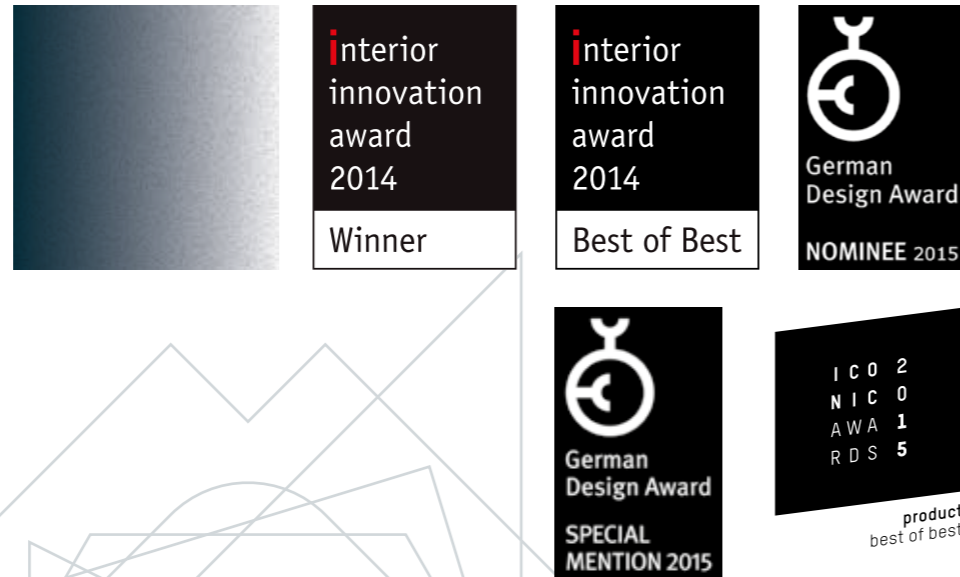
Wrong is well-known for his design of the Spun lamp, produced by Flos in 2003, which won the prestigious Red Dot Design Award. He was also a founding member of Established & Sons in 2005 and the

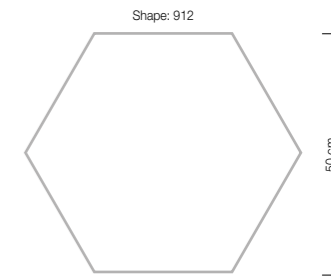
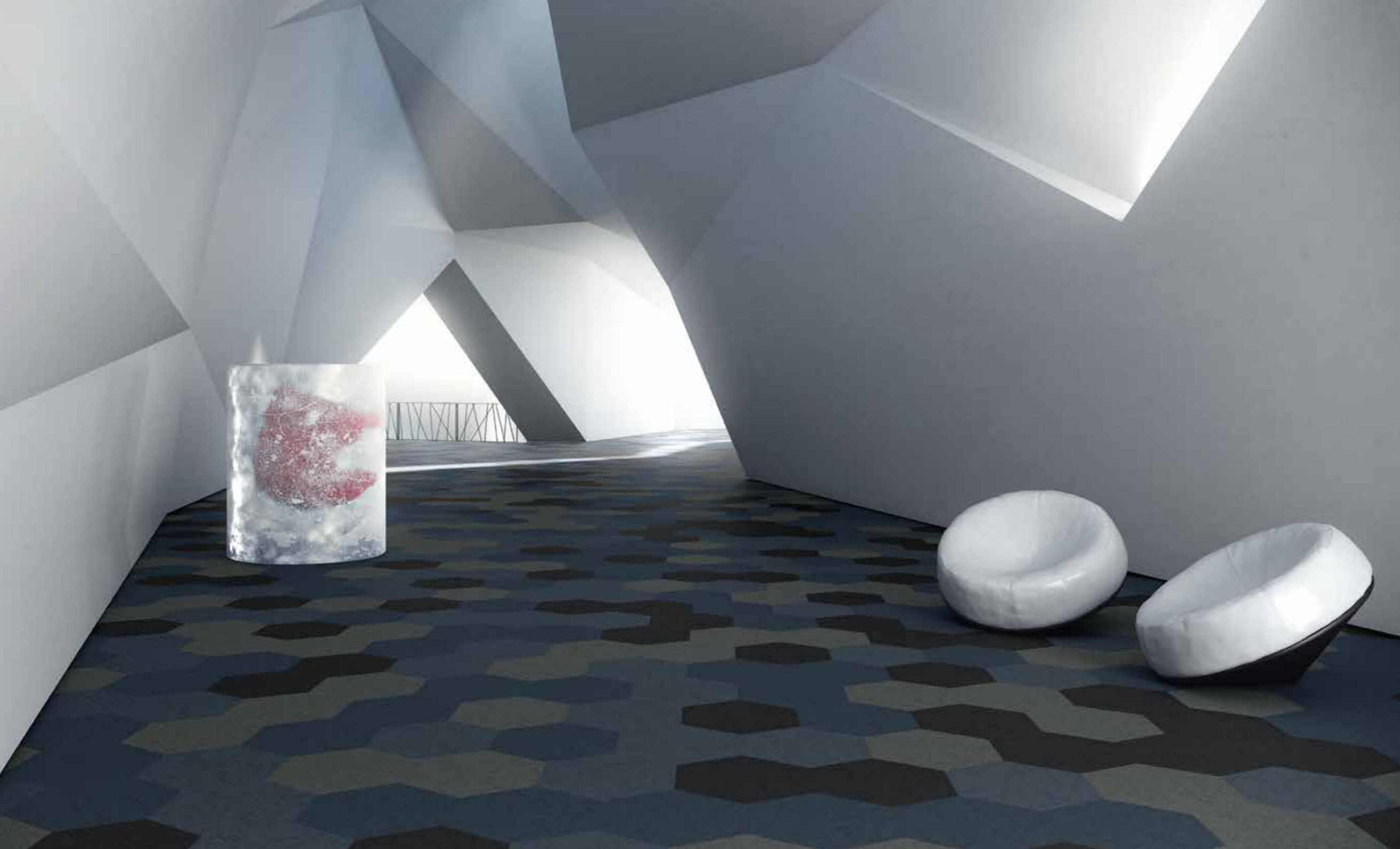
company's Design Director until 2012. Whilst there, he designed some of the last decades most iconic pieces and directed the production of a highly acclaimed furniture collection.

In 2011 Wrong launched The Wrong Shop, his own online retail platform selling design by designers and artists. He began a collaboration with the Danish brand HAY in January 2013 and launched a new brand called 'Wrong for Hay' in September 2013 during the London Design Festival. Wrong lives in London with his wife, Franca Berr, a jewellery designer, and their two children.

Date of birth
08/09/1971

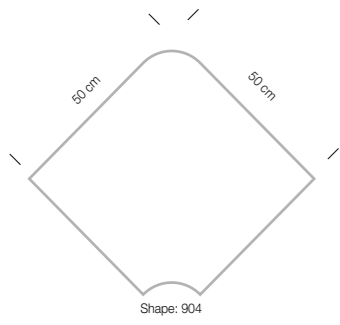
Education:
Camberwell School of
Art, Norwich School of
Art (BA Hons) 1989/93





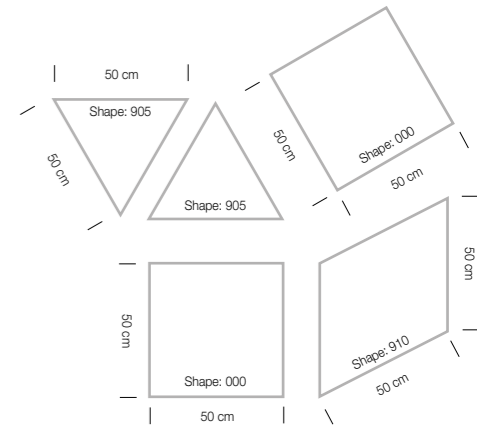
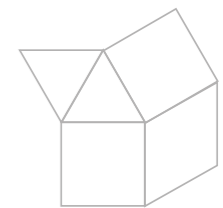
Article: T850 001
Colour: 390, 820, 850, 860
Shape: 912

Design: Sebastian Wrong



Article: T850 001
Colour: 300, 340, 350, 380, 390
Shape: 904

Design: Sebastian Wrong



Article: T850 001
 Colour: 240, 290
 Shape: 905

Article: T850 001
 Colour: 120, 340
 Shape: 000

Article: T850 001
 Colour: 260
 Shape: 910

Design: Sebastian Wrong

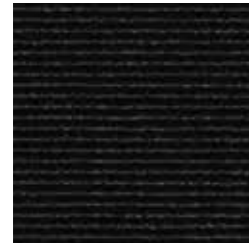
Family C1

Family C2

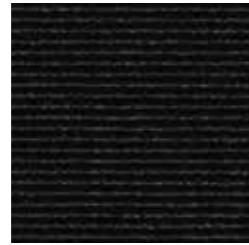
Family C3

Family C4

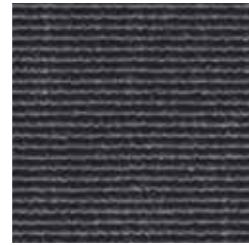
Family C5



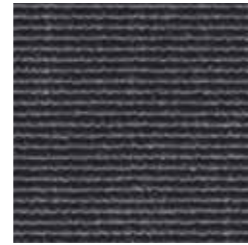
T850 001 Colour 390



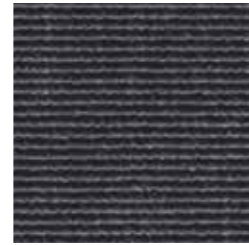
T850 001 Colour 390



T850 001 Colour 290



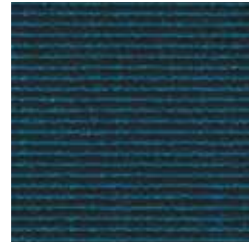
T850 001 Colour 290



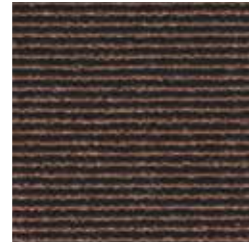
T850 001 Colour 290



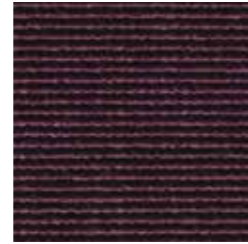
T850 001 Colour 380



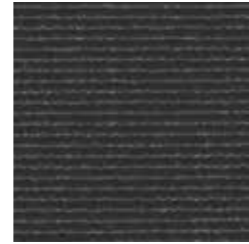
T850 001 Colour 860



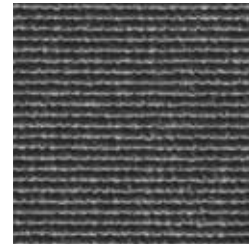
T850 001 Colour 260



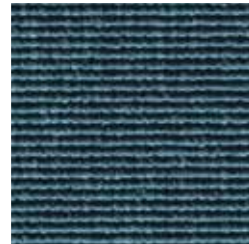
T850 001 Colour 650



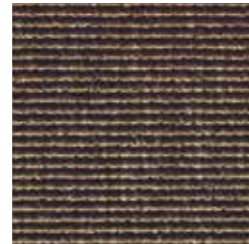
T850 001 Colour 770



T850 001 Colour 350



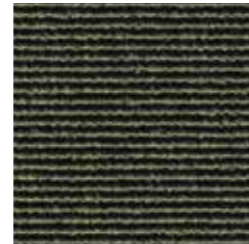
T850 001 Colour 850



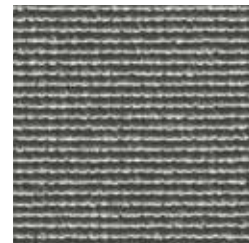
T850 001 Colour 240



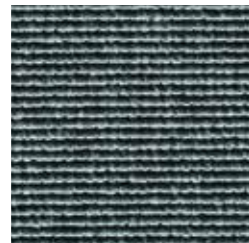
T850 001 Colour 500



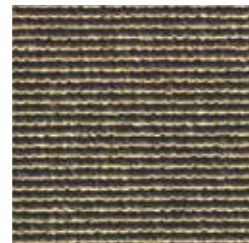
T850 001 Colour 750



T850 001 Colour 340



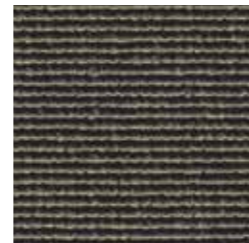
T850 001 Colour 820



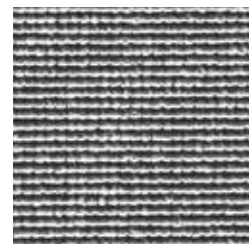
T850 001 Colour 120



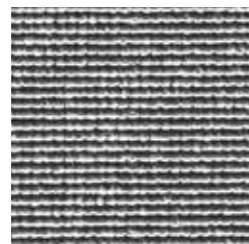
T850 001 Colour 160



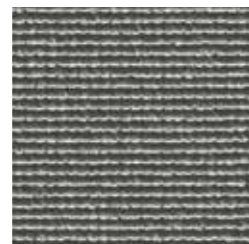
T850 001 Colour 740



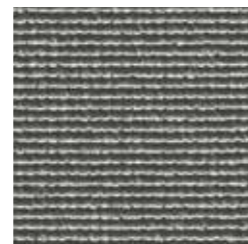
T850 001 Colour 300



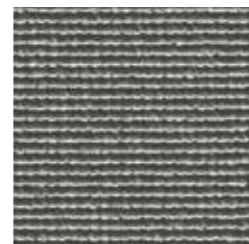
T850 001 Colour 300



T850 001 Colour 340



T850 001 Colour 340



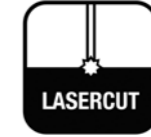
T850 001 Colour 340

Colours and families

Sebastian Wrong by Fletco is available in 18 different colours divided into five categories or families. Some colours appear in more than one family.

Principles for Product Codes (example):

Article: T850 001
Colour: 380
Shape: 904



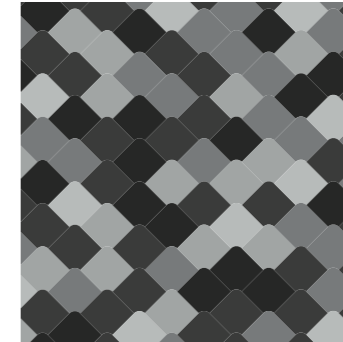
Laser cut for highest precision

Colours are representative and may vary from the actual product.

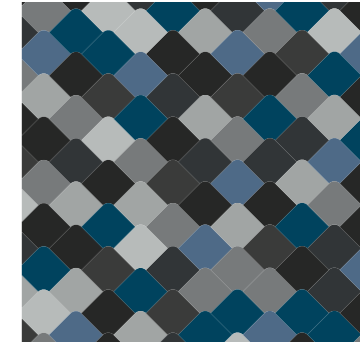
Examples of colour combinations

Please see below, the colour combinations made of either a single family or more families. Our colour families are only recommendations, you are of course free to choose the colours you want.

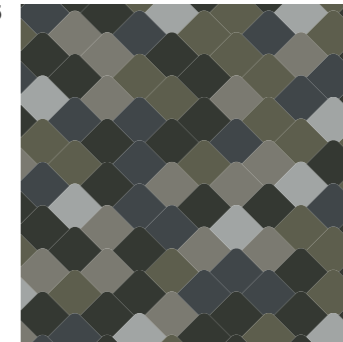
Family C1



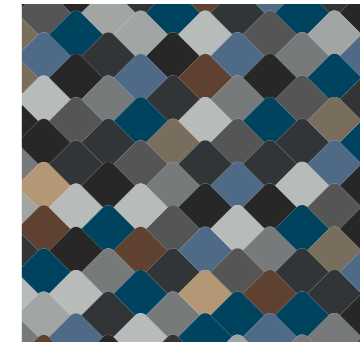
Families C1 & C2

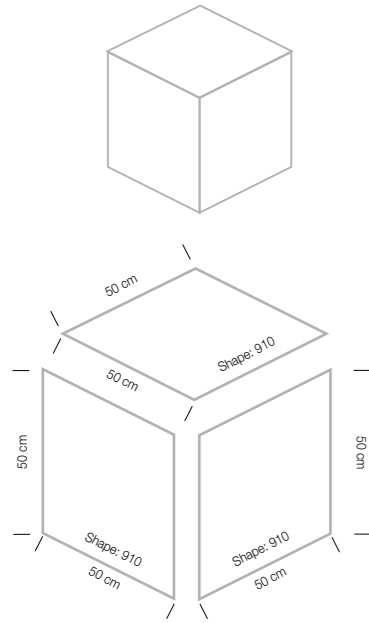


Family C5



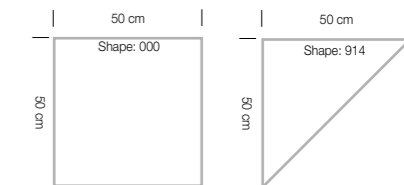
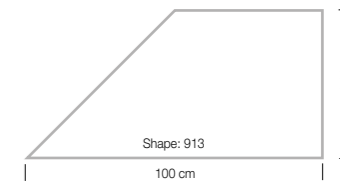
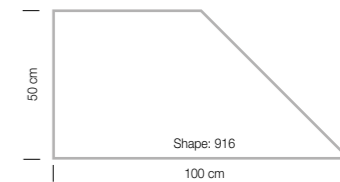
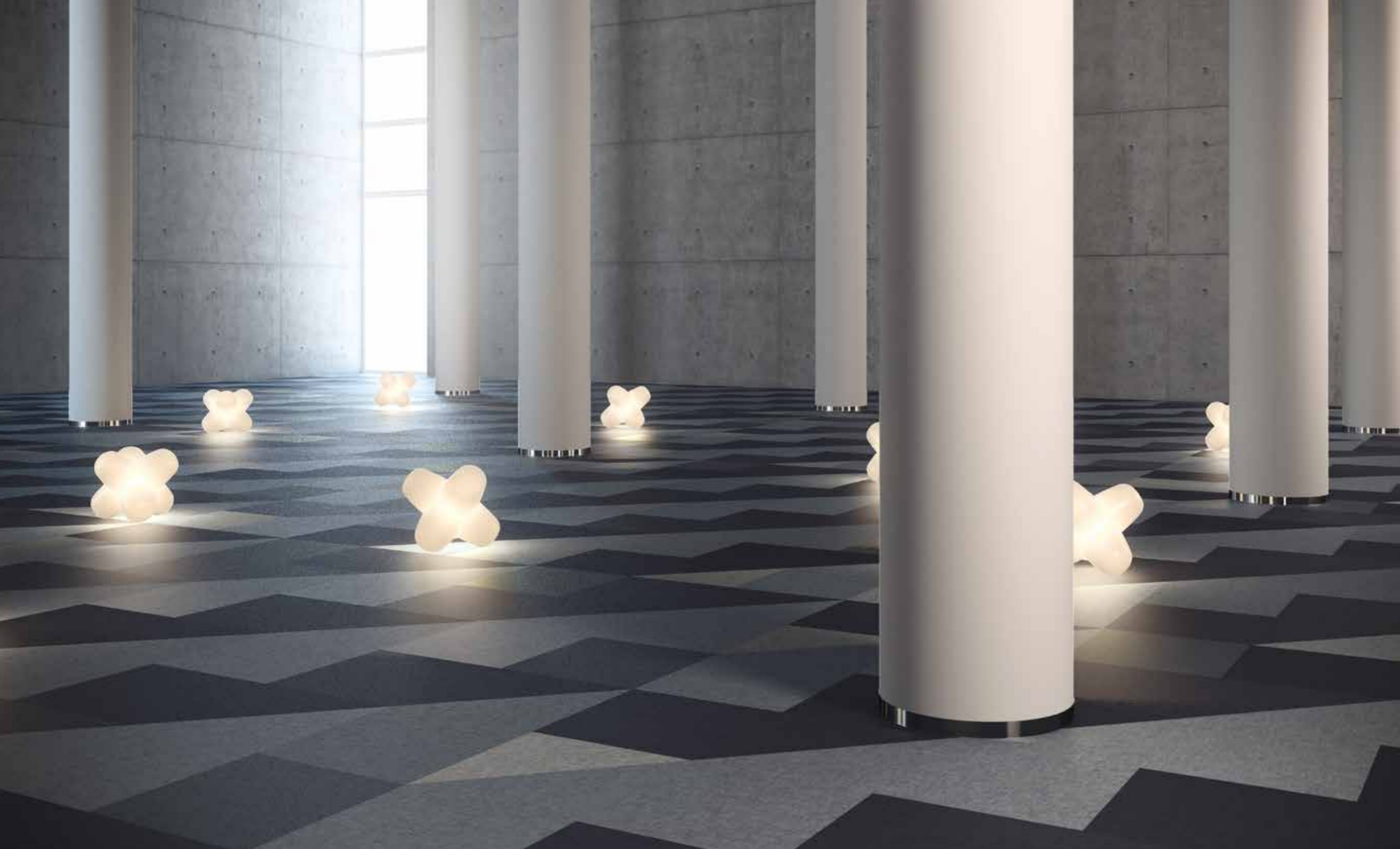
Families C1, C2 & C3





Article: T850 001
Colour: 290, 850, 860
Shape: 910

Design: Sebastian Wrong



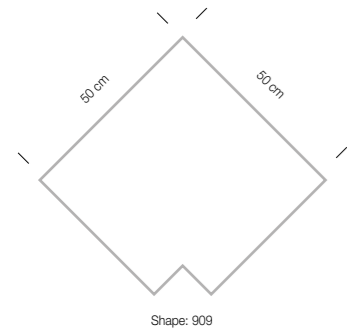
Article: T850 001
Colour: 390
Shape: 916

Article: T850 001
Colour: 340
Shape: 913

Article: T850 001
Colour: 350
Shape: 000

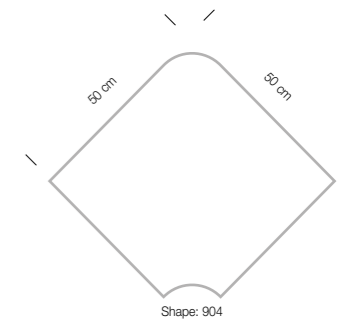
Article: T850 001
Colour: 300
Shape: 914

Design: Sebastian Wrong



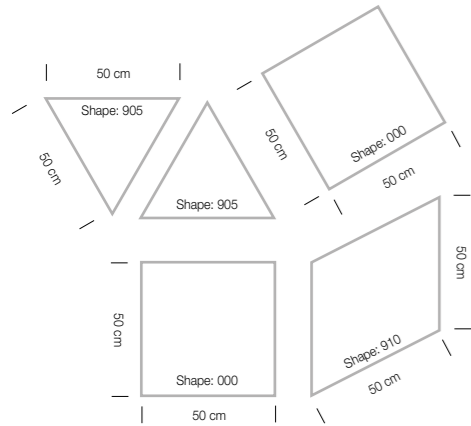
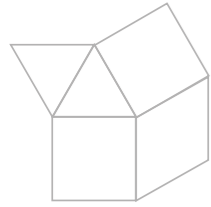
Article: T850 001
Colour: 290, 740, 750, 770
Shape: 909

Design: Sebastian Wrong



Article: T850 001
Colour: 160, 290, 340, 500, 650
Shape: 904

Design: Sebastian Wrong



Article: T850 001
Colour: 290, 340
Shape: 905

Article: T850 001
Colour: 300, 350
Shape: 000

Article: T850 001
Colour: 390
Shape: 910

Design: Sebastian Wrong

Sustainable Innovation

Fletco focuses on environmental issues in all our manufacturing processes, from cradle to cradle. Sustainability is key to all our product development – including Sebastian Wrong by Fletco.

One particular environmental problem that applies to carpet tiles generally is the backing, which traditionally contained PVC or bitumen. Thanks to new production technology, the backing of all Fletco carpet tiles is guaranteed free of these and other harmful chemical substances.

- Cradle-to-cradle and CO₂ reduction
- Backing made of minimum 60 % recycled materials
- Eco-friendly – cradle-to-cradle – suitable for thermal disposal
- Ecological product – free of bitumen, PVC and other environmentally-critical substances
- Produced using CO₂ neutral energy (steam)
- Odour-neutral
- Permanently antistatic
- Fletco TEXTiles® are TÜV approved “allergy-friendly”



Interior Design and Acoustics

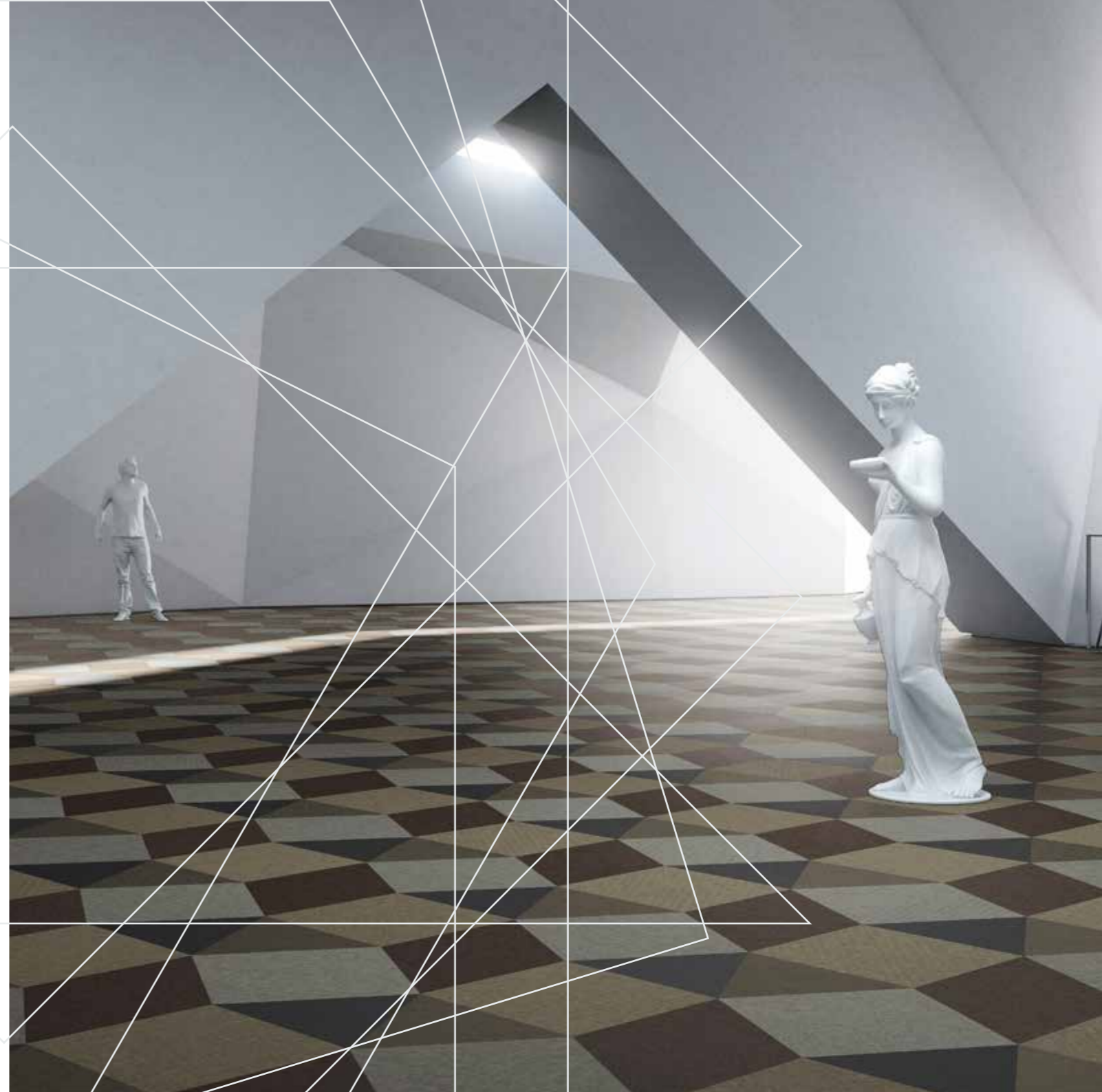
Noise reduction is becoming an important issue in interior design in both office buildings and in the hospitality sector. It is all about creating rooms and areas not only for the eyes, but for the ears as well.

A serious approach to acoustics is of great importance for creating a comfortable environment for work, meetings, entertainment and relaxation.

It is a proven fact that poor acoustics leads to workplace dissatisfaction and has a direct impact on employee performance and physical well-being.

Noise can cause both stress and frustration in office buildings and institutions – and when it comes to hospitality and entertainment, unwanted noise will have a negative effect on the overall experience.

Carpeting is one of the main tools to minimize unwanted noise – and Fletco Carpet Tiles will help you create rooms and spaces with a pleasant acoustics for working and experience.



Fletco.com

Get inspired at our homepage



Fletco Carpet Tiles A/S
Mads Clausens Vej 2
DK-7441 Bording
Tel: +45 96 60 30 00
E-mail: fletco@fletco.dk
www.fletco.com



