

Installation Instructions for Fletco TEXtiles

Important Notices

These Installation Instructions cover most installation procedures. If you run across a situation that isn't addressed in this document or requires more detailed assistance please contact Fletco Carpets A/S +45 9660 3000.

All carpet tiles should be carefully inspected for damage or defects prior to installation. Fletco Carpets will not be responsible for any cost associated with replacement or repair as a result of damaged or defective tiles being installed when said damage or defects were identifiable prior to installation.

If you encounter any conditions or defects during installation that could jeopardize the installation or affect the installation procedure, you STOP the installation immediately and call Fletco Carpets +45 9660 3000.

The carpet tiles are warranted in accordance with Fletco Carpets Standard Product Warranty.

EXCEPT AS EXPRESSLY PROVIDED IN THE STANDARD PRODUCT WARRANTY, FLETCO MAKES NO REPRESENTATIONS OR WARRANTIES, EXPRESS OR IMPLIED, INCLUDING, WITHOUT LIMITATION, ANY WARRANTY OF MERCHANTABILITY OR FITNESS OF ITS PRODUCTS FOR ANY PARTICULAR PURPOSES, AND HEREBY DISCLAIMS THE SAME. Without limiting the foregoing, Fletco Carpets will not be responsible for staining, soiling, contamination, tears, burns cuts, pulls or other damage, deterioration or loss caused by abuse, misuse, improper installation, improper maintenance or failure to protect carpet tiles during building construction. Fletco Carpets shall not be responsible for any damage or loss resulting from failure to strictly follow any part of these Installation Instructions, and such failure shall void any and all portions of the Standard Product Warranty that are affected by such failure.

WARNING: IN THE EVENT THAT ANY ASBESTOS-CONTAINING MATERIALS OR OTHER HAZARDOUS MATERIALS ARE ENCOUNTERED DURING INSTALLATION, YOU SHOULD STOP THE INSTALLATION IMMEDIATELY AND OBTAIN ASSISTANCE FROM A QUALIFIED REMEDIATION CONSULTANT OR CONTRACTOR PRIOR TO PROCEEDING.

Preliminary notes

The standard size of our TEXtiles tiles is 500 x 500 mm.
They are delivered in individual cartons, each having 20 tiles that are packed on pallets.

IMPORTANT:

Each carton has details regarding the quality, colour as well as batch number. Each tile is also marked with batch No. and the fitting direction (arrow).

**DO NOT MIX BATCH NO. IN THE SAME ROOM.
WITHIN EACH BATCH NO. THE TILES MUST BE INSTALLED IN PALLET SEQUENCE STARTING WITH THE LOWEST NO.**

When delivering more than one consignment, the packaging units should be stored according to the batches in order to avoid subsequent confusion with respect to the individual batches.

The tiles to be fitted should be acclimatised in the respective rooms for 24 hours before they are fitted. The temperature should not be below 16 °C and the relative humidity should not exceed 65%.

Subfloor to be tiled

The subfloor must correspond to the requirements of DIN 18365 (floor covering work) as well as of DIN 18202 (evenness tolerances).

They must be clean, dry, firmly secured as well as free of release agents and cracks to enable perfect fitting. Evenness tolerances of the subfloor must also be considered.

When fitting for the first time on a cement floor, the joints, holes as well as height differences in the floor must be filled with firm spackle. The entire subfloor should then be levelled (smoothened) with self-levelling, low-tension spackle.

When laying on anhydrite or calcium sulphate floor for the first time, the subfloor must be always smoothed, brush-finished, vacuumed and primed.

In case of unevenness, levelling is also necessary. If there are any raised floors alignments in the subfloor ensure that the height in the connection sections is uniform.

Ensure that the height of the raised floor plates is uniform when laying on raised floor systems. Major height offsets of the individual raised floor plates with respect to each other will become apparent in the top layer during the course of use. In such a case notify the customer in writing before starting the laying process.

All the old residues on the subfloor must be removed when renovating. The subfloor must always be levelled (smoothened) in such a case.

Raised floor plates must be peeled when renovating and re-aligned after refitting if necessary.

Separating layers, fragments of paint as well as dust must be removed before starting the laying process.

Laying

INSPECT FLETCO TEXTILES TILES TO BE SURE THEY MEET THE ORDER SPECIFICATIONS. IF THE WRONG PRODUCT OR COLOR IS INSTALLED, FLETCO WILL NOT BE RESPONSIBLE FOR CORRECTING THE PROBLEM.

INSTALLATION OF CARPET TILES SHOULD BE THE LAST ITEM ON THE CONSTRUCTION SCHEDULE. CAREFULLY CONSIDER THE RISKS IF YOU ARE ASKED TO INSTALL CARPET TILES TOO EARLY. IF CARPET TILES ARE INSTALLED BEFORE CONSTRUCTION IS COMPLETE, ANY STAINING, SOILING OR DAMAGE CAUSED BY OTHER TRADES MAY VOID THE PRODUCT WARRANTY.

NOTE: FLETCO ASSUMES NO LIABILITY FOR ISSUES RELATED TO OR RESULTING FROM INSTALLING OUT OF SPECIFICATION, INCLUDING, BUT NOT LIMITED TO, RECOMMENDED INSTALLATION METHOD.

Installation

In principle, TEXtile tiles are always secured against slipping in order to ensure stability as well as the properties warranted by the manufacturer.

Tackifiers can normally be used for TEXtile tiles from all well-known manufacturers. Fletco recommends to use a high-quality Tackifier, i.e. UZIN U 2100 or similar. Use a minimum of 150 g/m² (undiluted). Please contact your adhesive supplier for further instructions.

A floor plan with the door as the starting point is prepared for purposes of laying.

For this, a line running parallel to the main wall is drawn using chalk.

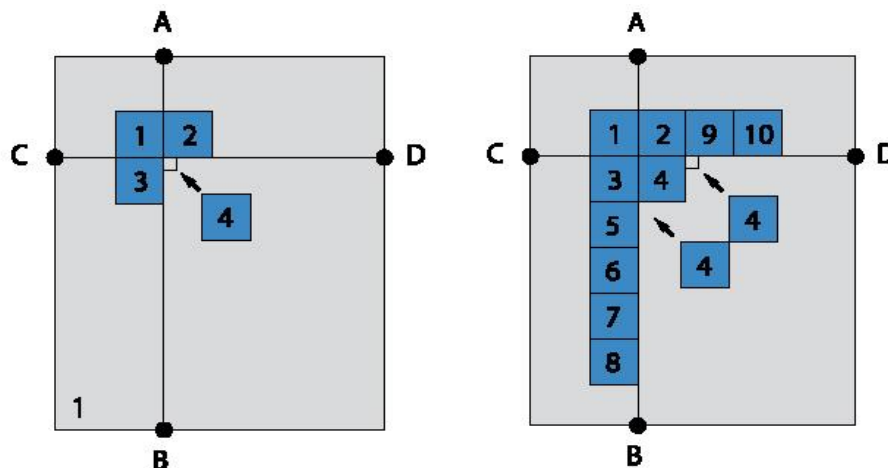
The distances to the side walls are measured from this line.

The tile pattern should not end with a full tile next to the walls. If necessary, the marked line must be shifted such that the tiles at the edges are of equal size on both the sides in an ideal case.

You now get four 90° angles at the intersection point of both lines.

One tile is laid and secured at each of these 90° angles.

Other tiles can now be placed and fixed next to this tile in steps and such that the joints are sealed.



When laying on raised floor subfloor, the tiles are aligned in a form identical to the raised floor plates (generally 60 x 60 cm) as per the existing raised floor pattern. The centre axes of tiles are aligned on the joints of the raised floor plates. Thus, a tile generally rests on each of the four raised floor plates.

When using a 50 x 50 cm tile on raised floors, a partially congruent fitting with the raised floor plate cannot be avoided.

When applying the tackifier, ensure that it does not run between the raised floor plates.

This can complicate the process of removing the raised floor plates in future and can also result in creaking noises in the raised floor.

The tiles must be fitted only after the tackifier has dried completely, otherwise it can lead to complicated removal of the tiles in case of frequent use, e.g. chair castor area.

It is recommended that a relevant template is made for special building forms, e.g. semi-circular walls, etc.

Conductive laying

The simplest form of this laying type differs only in the tackifier to be used.

Tackifiers can normally be used for TEXtile tiles from all well-known manufacturers. Fletco recommends to use a high-quality Tackifier, i.e. UZIN U 2100 or similiar. Use a minimum of 150 g/m² (undiluted). Please contact your adhesive supplier for further instructions.

For laying types with increased demands on the conductivity, e.g. for computer rooms or OP halls, copper strips are additionally placed and earthed at defined distances on the slip brake. Please contact your adhesive supplier for detailed information.

Concluding notes

Only the tiles belonging to the same batch are laid on connected surfaces as per the laying direction recommendation.

A laying plan should be prepared for larger areas with more than one batch. This plan should specify the areas on which the relevant batches are to be fitted. The number of tiles which must be kept aside from the respective batches should be clarified with the builder to be able to carry out repairs in future. These quantities must be taken into account when preparing the laying plan.

Tiles with geometric designs

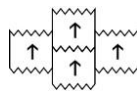
When laying tiles with geometric designs, it must be clarified in advance whether a specific arrangement of the tiles is necessary. This design may be formed using the fitted tiles if a large pattern is required. Preparing an accurate laying plan is always recommended.

The preceding specifications, especially the suggestions for handling and using our products, are based on our knowledge and experiences. We always recommend you to perform your own tests on account of the different materials and the working conditions beyond our sphere of influence in order to ensure suitability of our products for intended uses. A liability cannot be substantiated either from these notes, or from a verbal consultation, unless we are responsible for wilful intent or gross negligence.

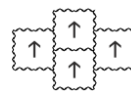
Installation:



Standard tiles:
Quarter turn



ZigZag-Tiles®:
Produced to order only



LockTiles®:
Produced to order only

We reserve the right to make changes within the scope of technical advancement without prior notice.